

Smithsonian Institution Archives. RU 290, Box 46, Photographs by Robert Capa, Oversize.

Archival documents made available with permission of the Smithsonian Institution Archives for educational and private use. Please contact the Smithsonian Institution Archives at OSIAREF@si.edu for permission to further reproduce this material.

MTG. - PANEL & SCREENING ENLGS.			MTG. - PANEL & SCREENING ENLGS.		
INTRODUCTORY PANEL #1	\$ 24.00				
" # 2	24.00	\$ 6.00			
Panel #1	44.00	15.00	Panel # 48	29.00	12.00
" #2	31.50	8.50	" # 49	31.50	9.50
" #3	44.00	17.00	" # 50	31.50	11.00
" #4	47.00	19.90	" # 51	31.50	11.00
" #5	37.50	11.50	" # 52	29.00	12.00
" #6	29.00	5.50	" # 53	29.00	12.00
" #7	44.00	17.00	" # 54	37.50	14.00
" #8	29.00	12.00	" # 55	37.50	14.00
" #9	37.50	12.00	" # 56	37.50	8.50
" #10	37.50	12.50	" # 57	29.00	12.00
" #11	29.00	12.00	" # 58	37.50	12.50
" # 12	29.00	5.50	" # 59A	37.50	13.50
" # 13	37.50	11.50	" # 59	29.00	12.00
" #14	29.00	12.00	" # 60	37.50	12.50
" #15	44.00	14.00	" # 61	29.00	12.00
" # 16	31.50	9.50	" # 62	37.50	12.00
" # 17	29.00	12.00	" # 63	37.50	12.00
" # 18	31.50	9.50	" # 64	31.50	9.50
" # 19	31.50	12.00	" # 65	47.00	19.90
" # 20	31.50	9.50	" # 66	31.50	11.00
" # 21	29.00	12.00	" # 67	31.50	9.50
" # 22	29.00	12.00	" # 68	29.00	12.00
" # 23	37.50	11.50	" # 69	31.50	9.50
" # 24	31.50	9.00	" # 70	62.00	21.00
" # 25	31.50	9.00	" # 71	47.00	19.90
" # 26	47.00	19.90	" # 72	24.00	
" # 27	31.50	8.50			
" # 28	37.50	13.00			
" # 29	31.50	12.00			
" # 30	29.00	12.00			
" # 31	37.50	14.00			
" # 32	29.00	12.00			
" # 33	31.50	9.50			
" # 34	29.00	9.00			
" # 35	31.50	9.50			
" # 36	37.50	21.00			
" # 37	29.00	12.00			
" # 38	29.00	12.00			
" # 39	44.00	27.00			
" # 40	47.00	19.90			
" # 41	31.50	12.00			
" # 42	31.50	10.50			
" # 43	31.50	9.50			
" # 44	31.50	10.50			
" # 45	31.50	11.00			
" # 46	29.00	12.00			
" # 47		19.90			

NOTE: The above numbers are keyed to the blueprints showing position of prints, panel numbers and number of each print. We have broken down prices in two categories, 1 price for mounting, screening and aluminum. The other price for the cost of removing and replacing enlargements. Two sets of prints are furnished herewith bearing panel number, print size and letter of each individual print.

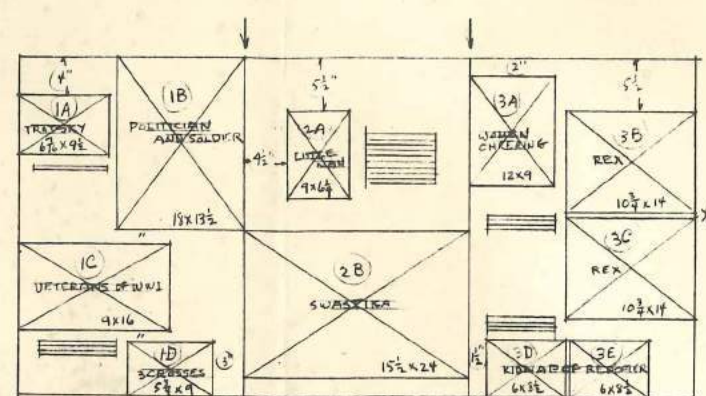
There may be some variation of these prices in the event one or more of the pictures or panels have to be replaced. It is suggested that an average price be placed at about \$50.00 per panel.



PANEL I
36" high x 24" wide
TITLE POSTER



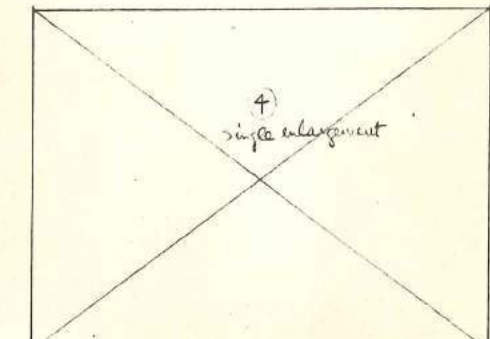
PANEL II
36" high x 24" wide
INTRODUCTION



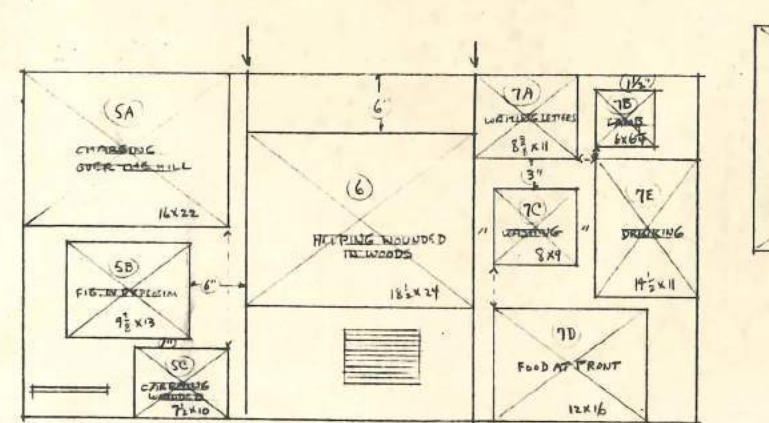
PANEL 1
36" high x 24" wide
SEEDS OF WAR

PANEL 2
36" high x 24" wide
SEEDS CONT.

PANEL 3
36" high x 24" wide
SEEDS CONT.



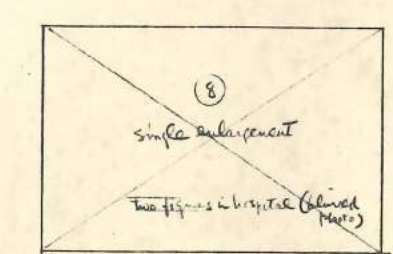
PANEL 4
36" high x 48" wide
LOYALIST SOLDIER AT MOMENT OF DEATH



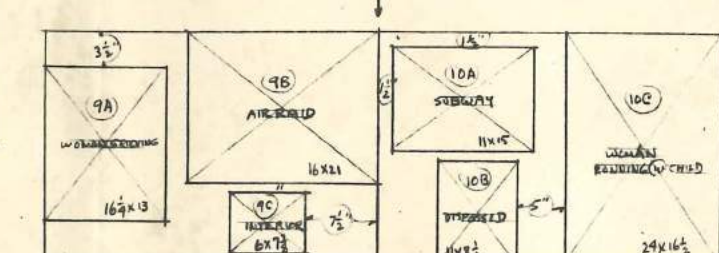
PANEL 5
36" high x 24" wide
SPAIN

PANEL 6
36" high x 24" wide
CONT.

PANEL 7
36" high x 24" wide
CONT.

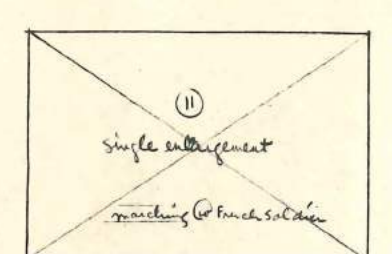


PANEL 8
24" high x 36" wide
CONT.



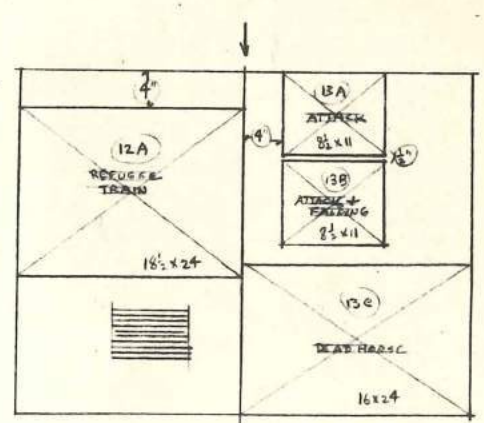
PANEL 9
24" high x 36" wide
CONT.

PANEL 10
24" high x 36" wide
CONT.



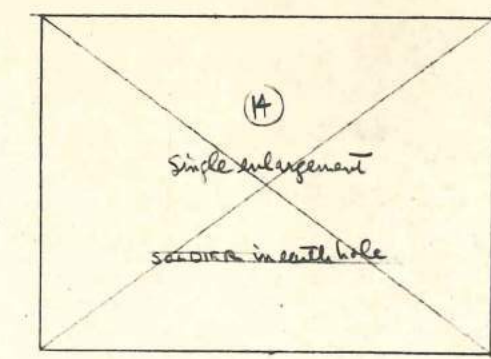
PANEL 11
24" high x 36" wide
CONT.

SPAIN conclusion

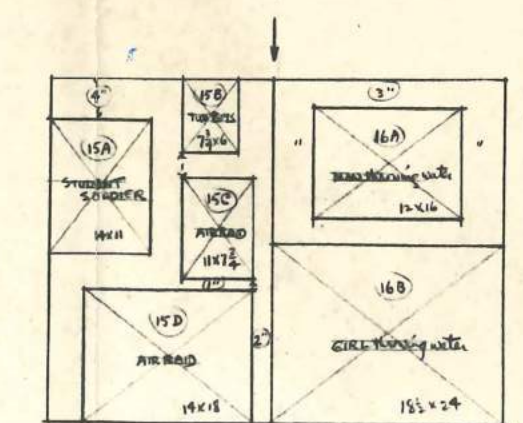


PANEL 12
36" high x 24" wide
CHINA

PANEL 13
36" high x 24" wide
CONT.



PANEL 14
36" high x 48" wide
CONT.



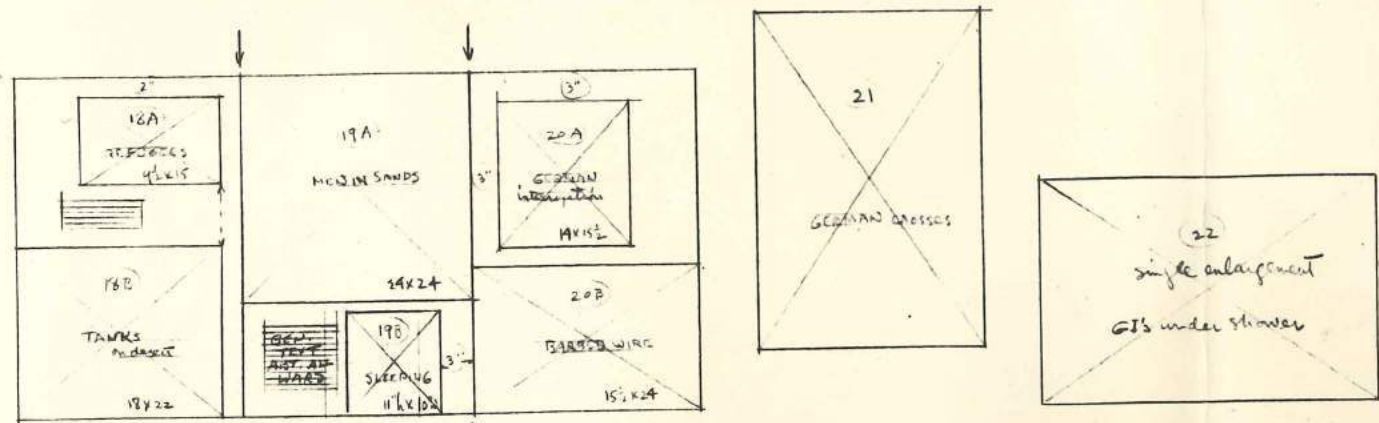
PANEL 15
36" high x 24" wide
CONT.

PANEL 16
36" high x 24" wide
CONT.



PANEL 17
24" high x 36" wide
CHINA conclusion

Sheet 1 of 4
Scale: 1" = 1 foot



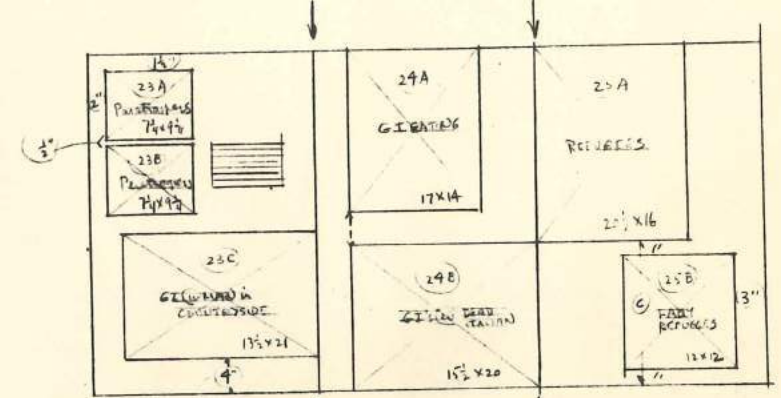
PANEL 18
36" high x 24" wide
NORTH AFRICA

PANEL 19
36" high x 24" wide
CONT.

PANEL 20
36" high x 24" wide
CONT.

PANEL 21
36" high x 24" wide
CONT.

PANEL 22
24" high x 36" wide
NORTH AFRICA conclusion



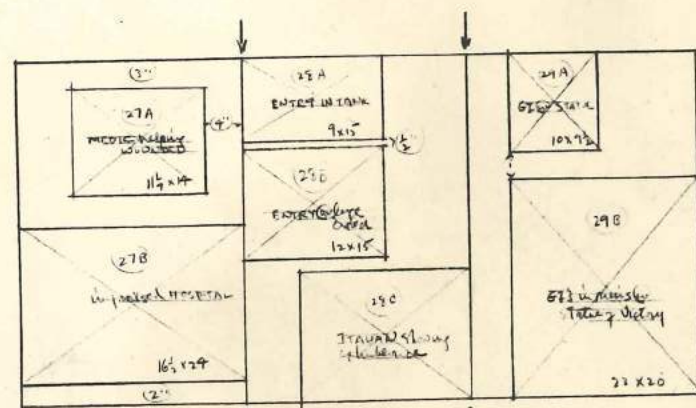
PANEL 23
36" high x 24" wide
ITALY

PANEL 24
36" high x 24" wide
CONT.

PANEL 25
36" high x 24" wide
CONT.



PANEL 26
36" high x 48" wide
ITALY CON.

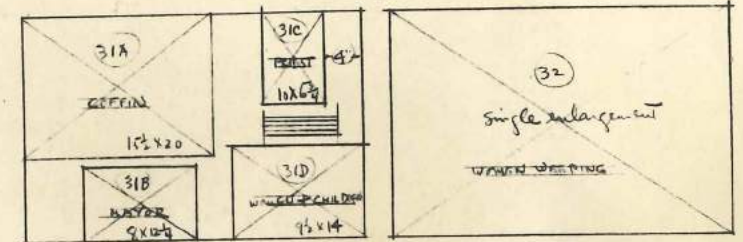


PANEL 27
36" high x 24" wide
CONT.

PANEL 28
36" high x 24" wide
CONT.

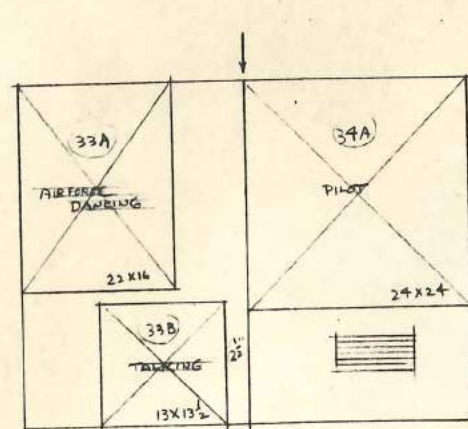
PANEL 29
36" high x 24" wide
CONT.

PANEL 30
24" high x 36" wide
CONT.



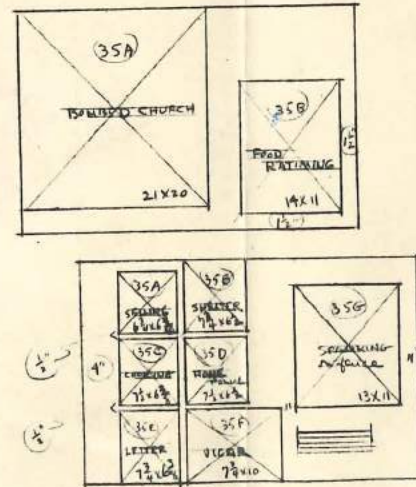
PANEL 31
24" high x 36" wide
CONT. NORTH AFRICA

PANEL 32
24" high x 36" wide
ITALY conclusion

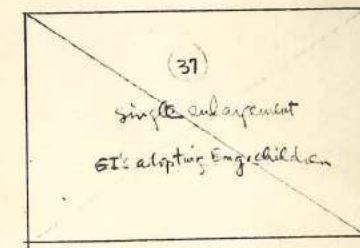


PANEL 33
36" high x 24" wide
ENGLAND

PANEL 34
36" high x 24" wide
CONT.

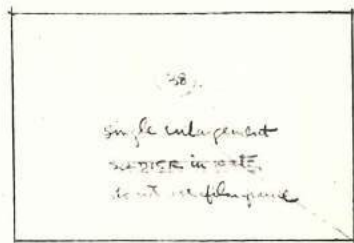


PANEL 35
24" high x 36" wide
ENGLAND PANEL 36
24" high x 36" wide
ENGLAND CONT.

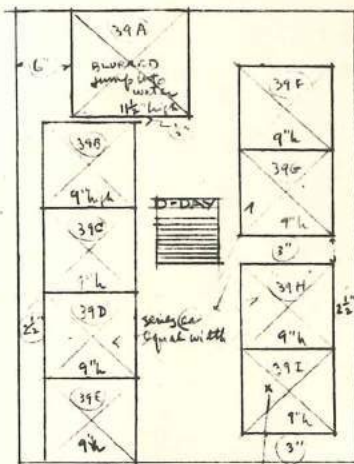


PANEL 37
24" high x 36" wide
ENGLAND conclusion

Sheet 2 of 4
Scale: 1" = 1 foot



PANEL 38
24" high x 36" wide
INVASION



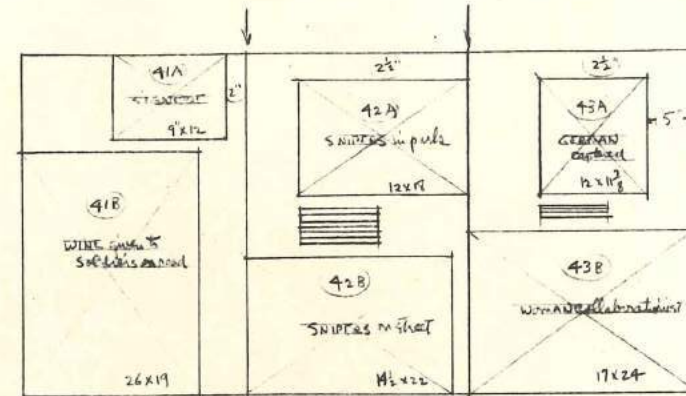
PANEL 39
48" high x 36" wide
D-DAY

NOTE:
hit film frame
Tack between
A/Pad only"



PANEL 40
36" high x 48" wide

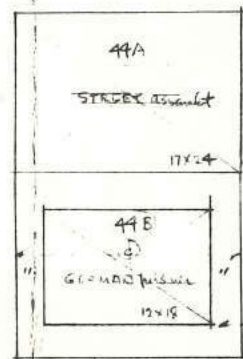
INVASION Conclusion



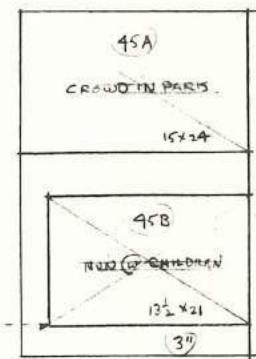
PANEL 41
36" high x 24" wide
FRANCE

PANEL 42
36" high x 24" wide
CONT.

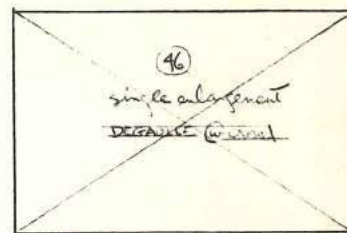
PANEL 43
36" high x 24" wide
CONT.



PANEL 44
36" high x 24" wide
CONT.



PANEL 45
36" high x 24" wide
CONT.

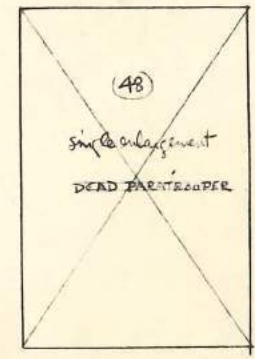


PANEL 46
24" high x 36" wide

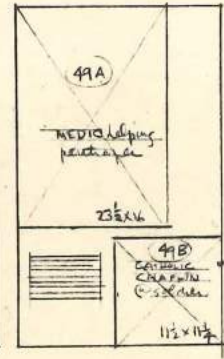
FRANCE conclusion



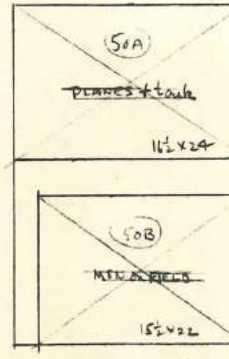
PANEL 47
48" high x 36" wide
GERMANY



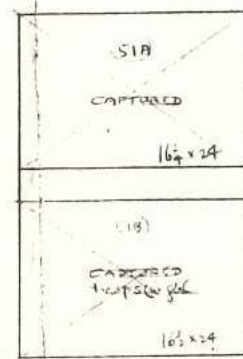
PANEL 48
36" high x 24" wide
CONT.



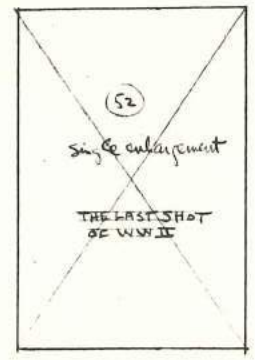
PANEL 49
36" high x 24" wide
CONT.



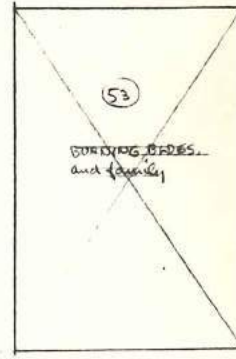
PANEL 50
36" high x 24" wide
CONT.



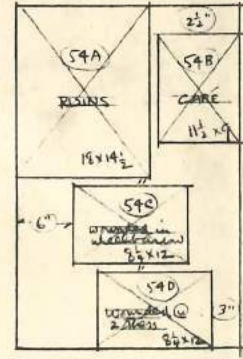
PANEL 51
36" high x 24" wide
GERMANY CONT.



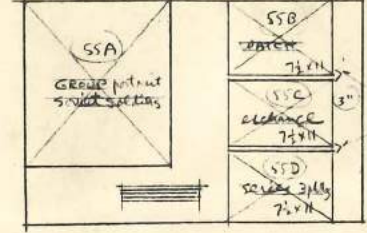
PANEL 52
36" high x 24" wide
CONT.



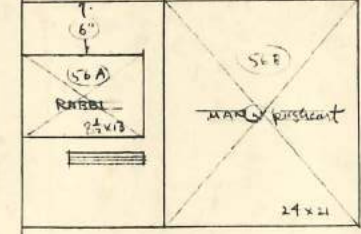
PANEL 53
36" high x 24" wide
CONT.



PANEL 54
36" high x 24" wide
CONT.



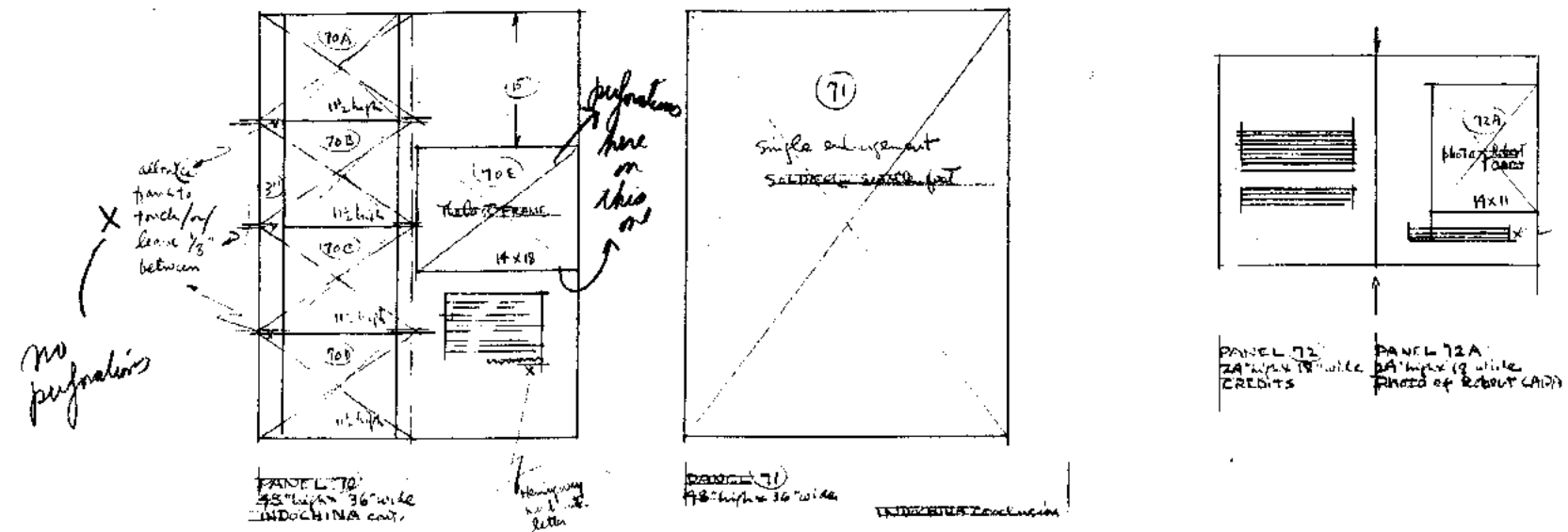
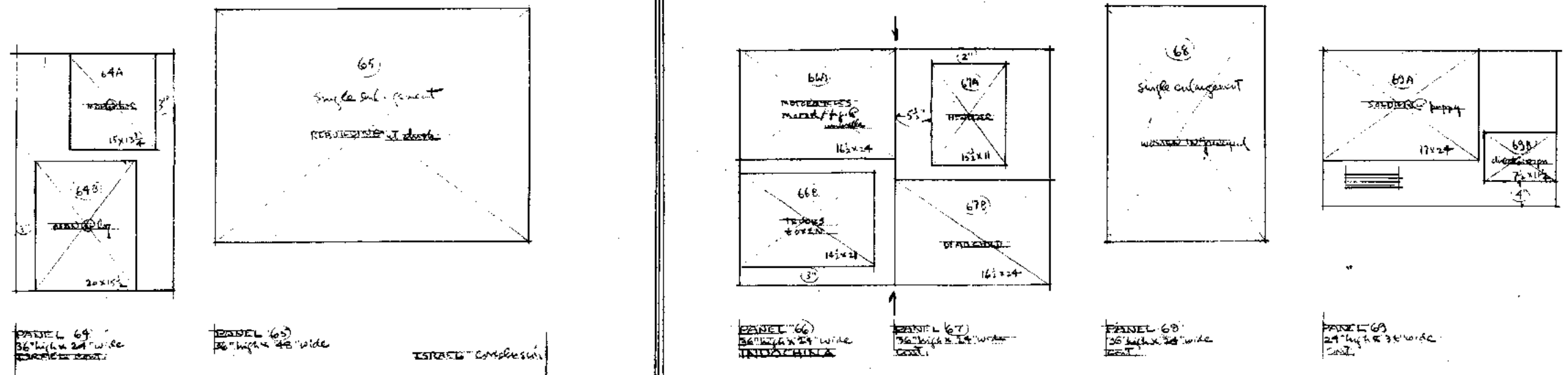
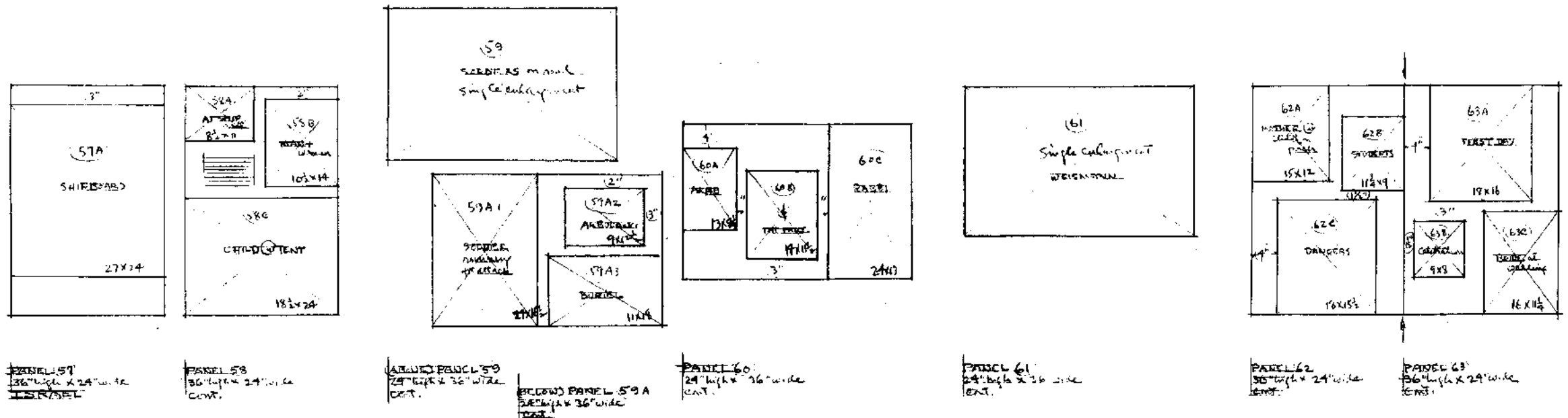
PANEL 55
24" high x 36" wide
CONT.



PANEL 56
24" high x 36" wide

GERMANY CONCLUSION

Sheet 3 of 4
Scale 1" = 1 foot



Sheet 4 of 4 (front street)
Scale: 1" = 1 foot
APPROXIMATE RUNNING FEET = 1175
(72) MAJOR PANELS plus credit panels and
Designed by CHARLOTTE T. DYER
12/4/50